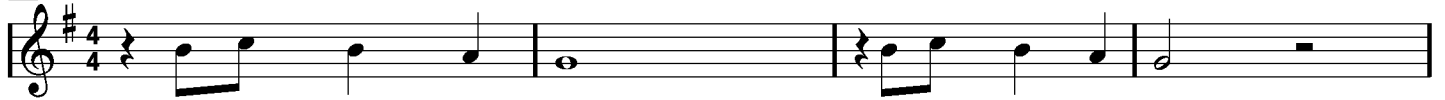


Every breath you take

POLICE

Composée par STING

A



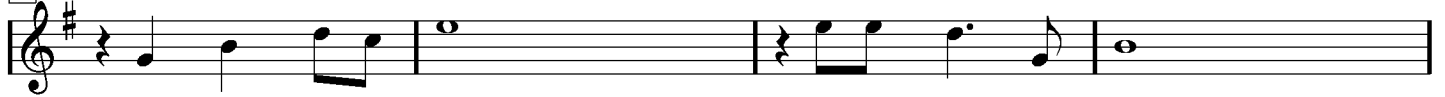
E - v'ry breath you take
E - v'ry sin - gle day

E - v'ry move you make
E - v'ry word you say



E - v'ry bond you break E - v'ry step you take I'll be wat - ching you
E - v'ry game you play E - v'ry night you say I'll be wat - ching you

B



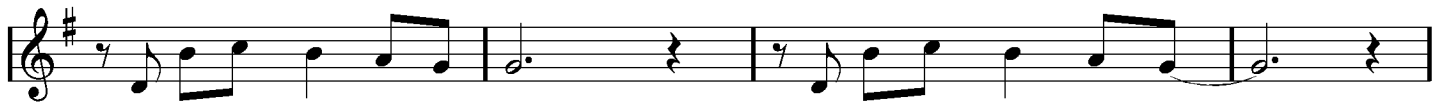
O can't you-ou see

You be - long to me



Ho-ow my poor heart a - ches

With e - v'ry ste - ep you take



In e - v'ry mo - ove you make

And e - v'ry vow you break



E - v'ry smile you fake E v'ry claim you stake I'll be wat - ching you

ETC

PONT

Since you've gone I been lost
without a trace
I dream at night I can only see your
face
I look around but it's you I can't
replace
I feel so cold and I long for your
embrace
I keep crying baby, baby, please

Pa Pa Pa...

O can't you see
You belong to me
How my poor heart aches
With every breath you take

Every move you make
Every vow you break
Every smile you fake
Every claim you stake
I'll be watching you (bis)

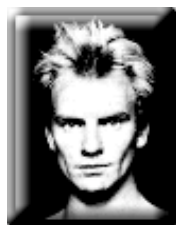
4 mesures
pa pa pa...

Every breath you take
Every move you make
Every bond you break
Every step you take

Every single day
Every word you say
Every game you play
Every night you stay

Every move you make
Every bond you break
Every smile you fake
Every claim you stake
Every single day
Every word you say
Every game you play
Every night you stay

CODA AD LIB (6fois)



STING

D.MARTIGNY